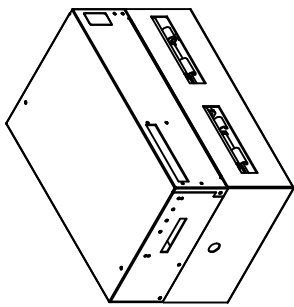
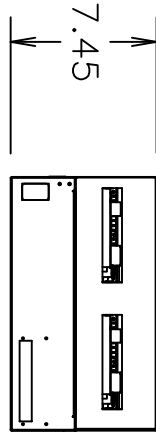
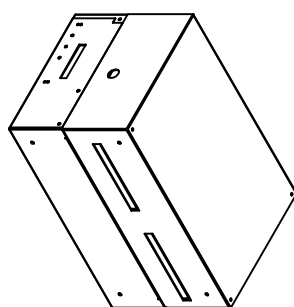
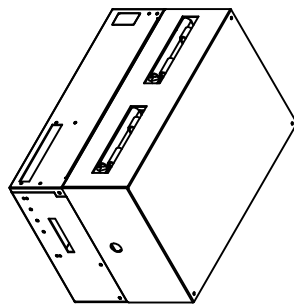
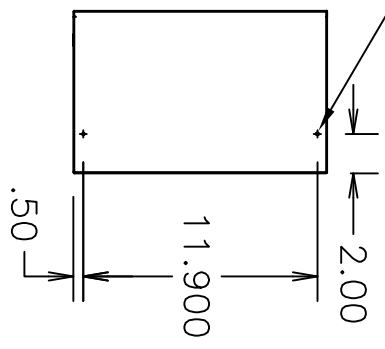
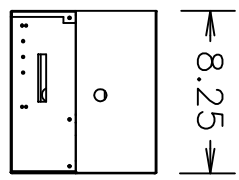


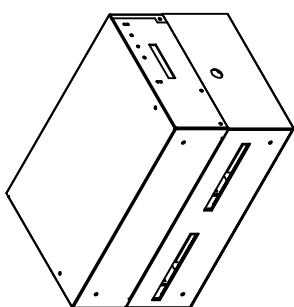
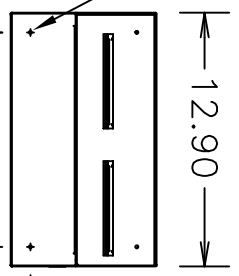
REVISIONS		BY	DATE
LTR	DESCRIPTION		
A	RELEASE	TM	11-6-09
B	ADDED LEMUR-K MOUNTING DETAILS,	TM	1-22-13



$\triangle B$   
6-32 TAP(2)  
AVAILABLE FOR  
MOUNTING



$\triangle B$   
8-32 TAP(2)  
AVAILABLE FOR  
MOUNTING



MATERIAL: —	UNLESS SPECIFIED DIMENSIONS ARE IN INCHES		CUST. APP.	ENGR. MOD	<p><b>BOCA Systems, Inc.</b></p> <p><math>\triangle B</math> LEMUR-2/2K REFERENCE</p>		
FINISH: —	FRACTION ± — .XXX± .005	DECIMAL XXX± .010	ANGLE ±1/2°	DWN BY T.M.			
APPLICATION			PAGE OF	SCALE:			
ASSEMBLY	MODEL	QTY	DATE				
	LEMUR-2/2K	1	11-6-09	CODE IDENT. No.	SIZE	DRAWING NO.	REV.
				A		SK1106093	B

REMOVE ALL BURRS AND SHARP EDGES